

# Apollo CRO PLUS

150° Color, AF, FFA and ICGA

Video Recording

Offline Retina Assistant



# Microclear Apollo ultra-widefield CRO PLUS with ICGA

Pushing the boundaries of Indocyanine Angiography



## Indocyanine Angiography

Fast, precise and flexible management of your ICGA sessions with multiple options



## Autofluorescence

Single shot or combine multiple shots to increase the resolution



## Video Recording

Don't miss the initial stages and store and review from any workstation



## 150° one shot and up to 240° in two shots

Capture two to six photos and combine in a panorama view easily thanks to the fast and precise joystick control



## Unlimited offline Retina Assistant included

Ready to use Risk Assessment software with 19 pathologies detection to support your decisions



## Pupil size 1.5mm

Optimal photos even on really small pupils resulting on higher success rate of gradable images



## Fluorescein Angiography

Maximum control of your Angiography examination with all the features you need



## Strong penetration: cataract free

Strong Confocal design allows to separate better the retina layers and to penetrate stronger through cataract and eye opacities.



## Optical Zoom 150° - 90° - 45° - 22° without changing lens

One click switch Field of View to zoom into areas of interest



## Cells and blood flow tools option

Optional module available for 5° cellular view imaging with software for retinal cell count, blood flow velocity and vascular thickness measurement



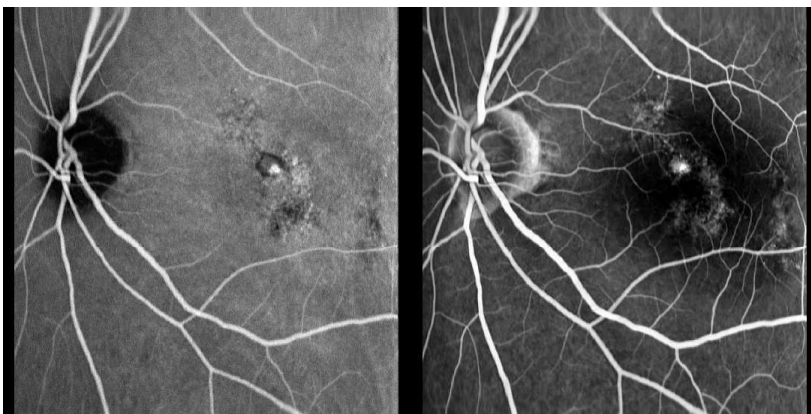
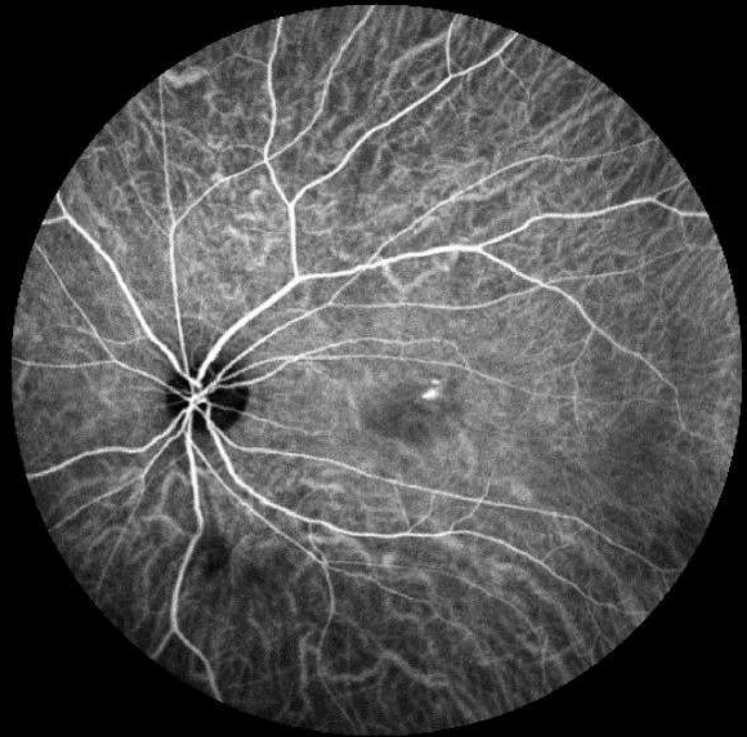
## Pushing the boundary of ICGA

Achieve full control of your exam modalities.

The state-of-the-art Indocyanine Angiography module allows you to take out the most for your clinical evaluation. Take advantage of the ultra-widefield and shot 150° images easily and with confidence.

Move quick and precise with the powerful joystick which gives you full flexibility on the operation.

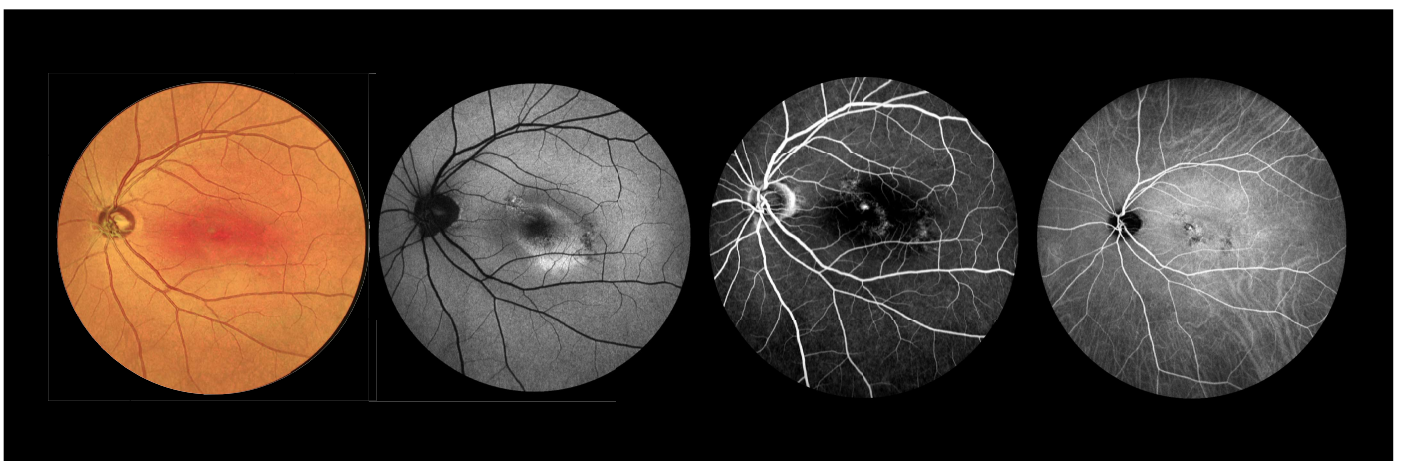
Customize the light intensity with instant preview, exploit the optical zoom for details and cover ultra-widefield shots with the versatile mosaic up to 240°.



### All modalities in one model

CRO PLUS is the flagship of the Apollo family and includes all features of **CRO** adding ICGA.

Obtain ultra-widefield images with easy and fast capture of 150° retinal photos in all modalities: Infrared, Redfree, Colour, Autofluorescence, Fundus Fluoroangiography, and create panorama views up to 240°.



## Apollo CRO PLUS technical specifications

<b>Imaging Modalities</b>	Infrared - 785 nm Redfree - 488 nm Color Autofluorescence Fluorescein Angiography photo and video Indocyanine Angiography photo and video
<b>Field of View</b> (eye center)	One shot single capture Optical zoom 150° / 90° / 45° / 22°
<b>Automatic Montage</b>	Up to 240° mosaic 2 to 9 images
<b>Non Mydriatic</b>	Minimum pupil 1.5mm
<b>Resolution</b>	5 microns
<b>Fixation Targets</b>	Internal 1 central and 8 peripheral fixation targets External flexible target
<b>Dioptr Compensation</b>	-15D - +15D
<b>Software Included</b>	Patient management Retina review and annotation Multiple review stations DICOM compatible
<b>Retina Assistant</b>	19 pathologies detection Offline, no internet required Unlimited license use
<b>Hardware Included</b>	PC computer Monitor Table (printer)
<b>Power</b>	Voltage: 100-240V~50-60Hz

**Microclear is committed to the highest standard of retina imaging**

Suzhou MicroClear Medical Instruments Co., Ltd

Tel : +86-512-67067163

Fax : +86-512-67066173

E-mail : [marketing@microcleartech.com](mailto:marketing@microcleartech.com)

Suite 1601-1602, G2 Building, No.88 Jinjihu Avenue, Suzhou Industrial Park, Suzhou, Jiangsu P.R.China